

SCHODER
D.B. 149,
PG. 297

THOERNER
D.B. 1-24, PG. 215

SPILLMAN
D.B. 386, PG. 78

GILLIAM
D.B. 409, PG. 28



N 15°59'50" W 510.82'

N 15°20'52" W 188.25'

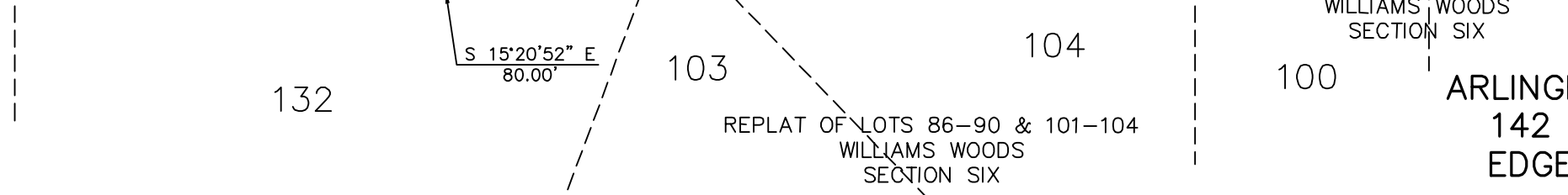
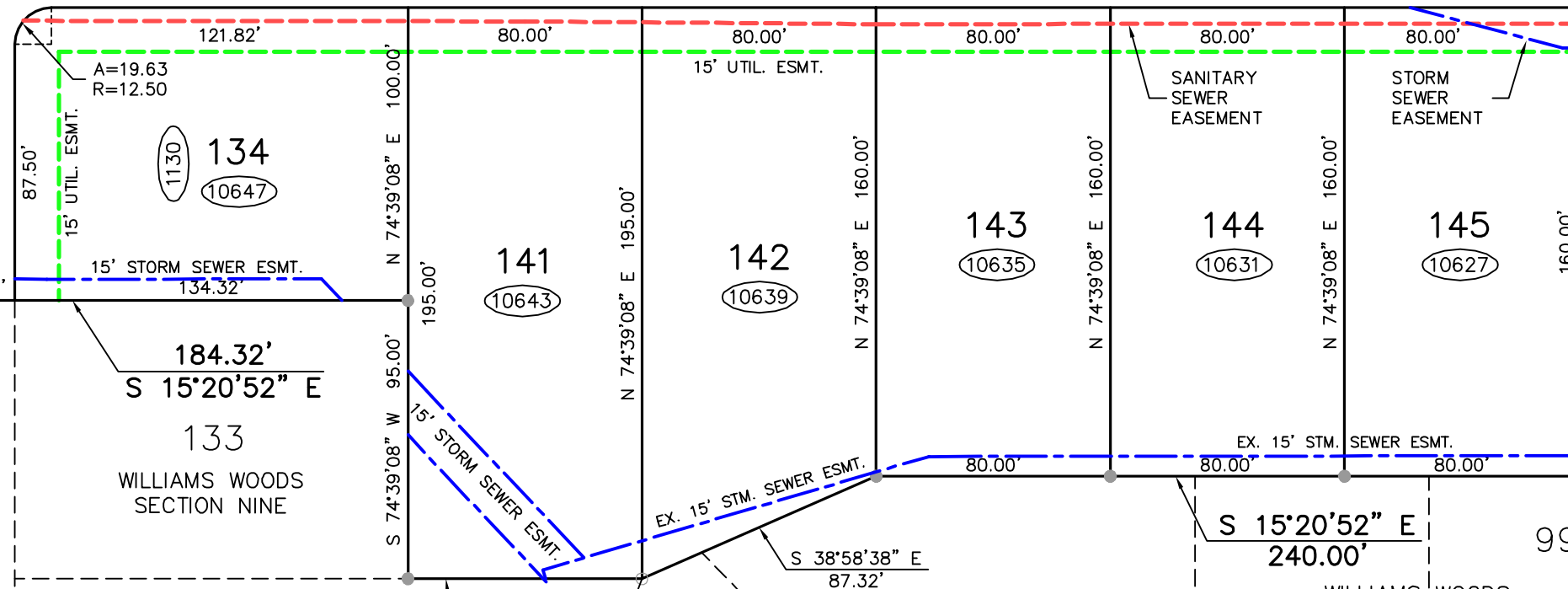
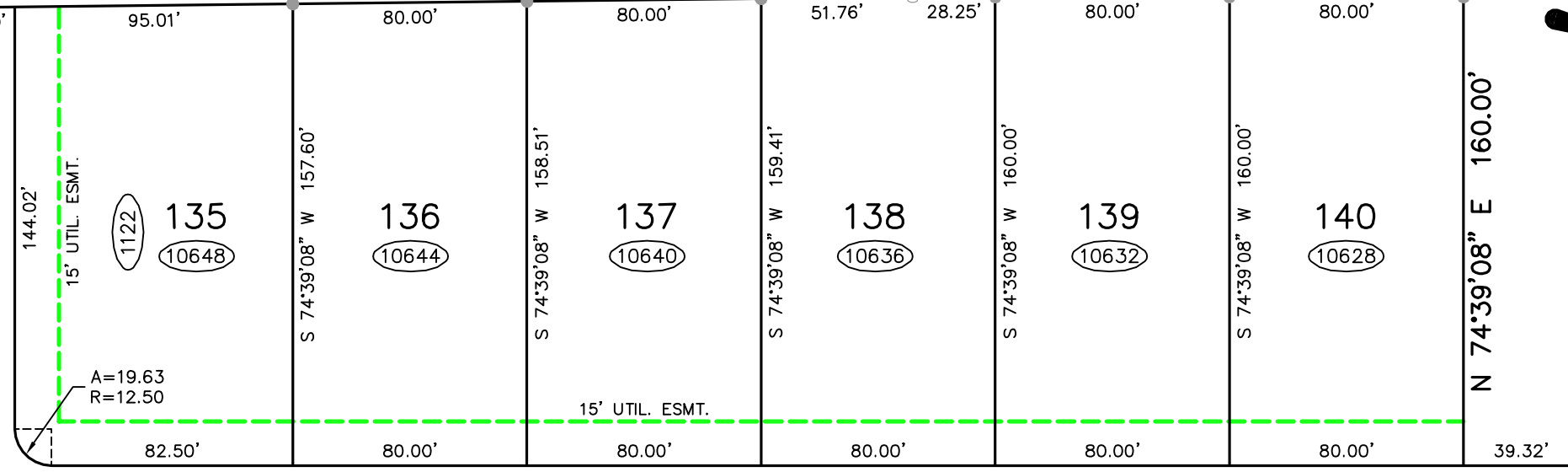
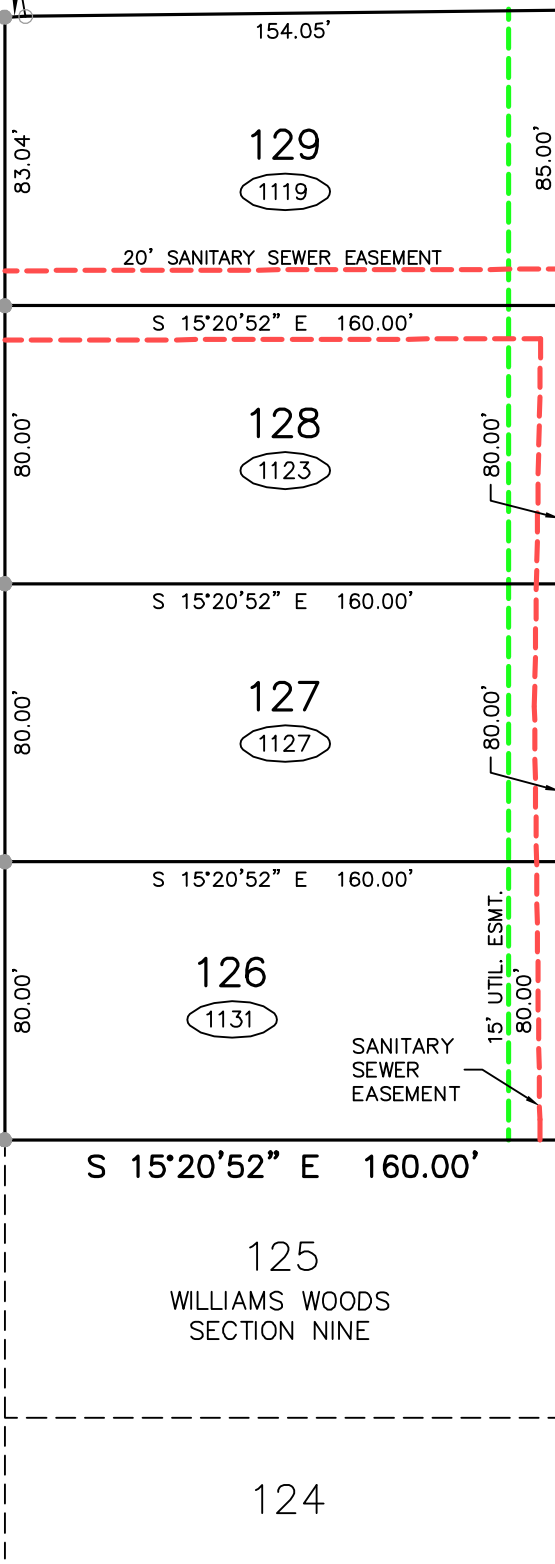
S 74°39'08" W 323.04'

LAURELWOOD LANE

PEPPERWOOD DRIVE

N 74°39'08" E 210.00'

\\2000-0351\PHASE3\sales\plat\sect 10\sect10.dwg, 4/24/2007 9:33:05 AM



SECTION TEN
WILLIAMS WOODS
SUBDIVISION
KENTON COUNTY KENTUCKY

DEVELOPER
ARLINGHAUS BUILDERS INC.
142 BARNWOOD DRIVE
EDGEWOOD, KENTUCKY

ENGINEER
ECE Erpenbeck
Consulting
Engineers, Inc.

4205 Dixie Hwy • Elsmere, KY 41018