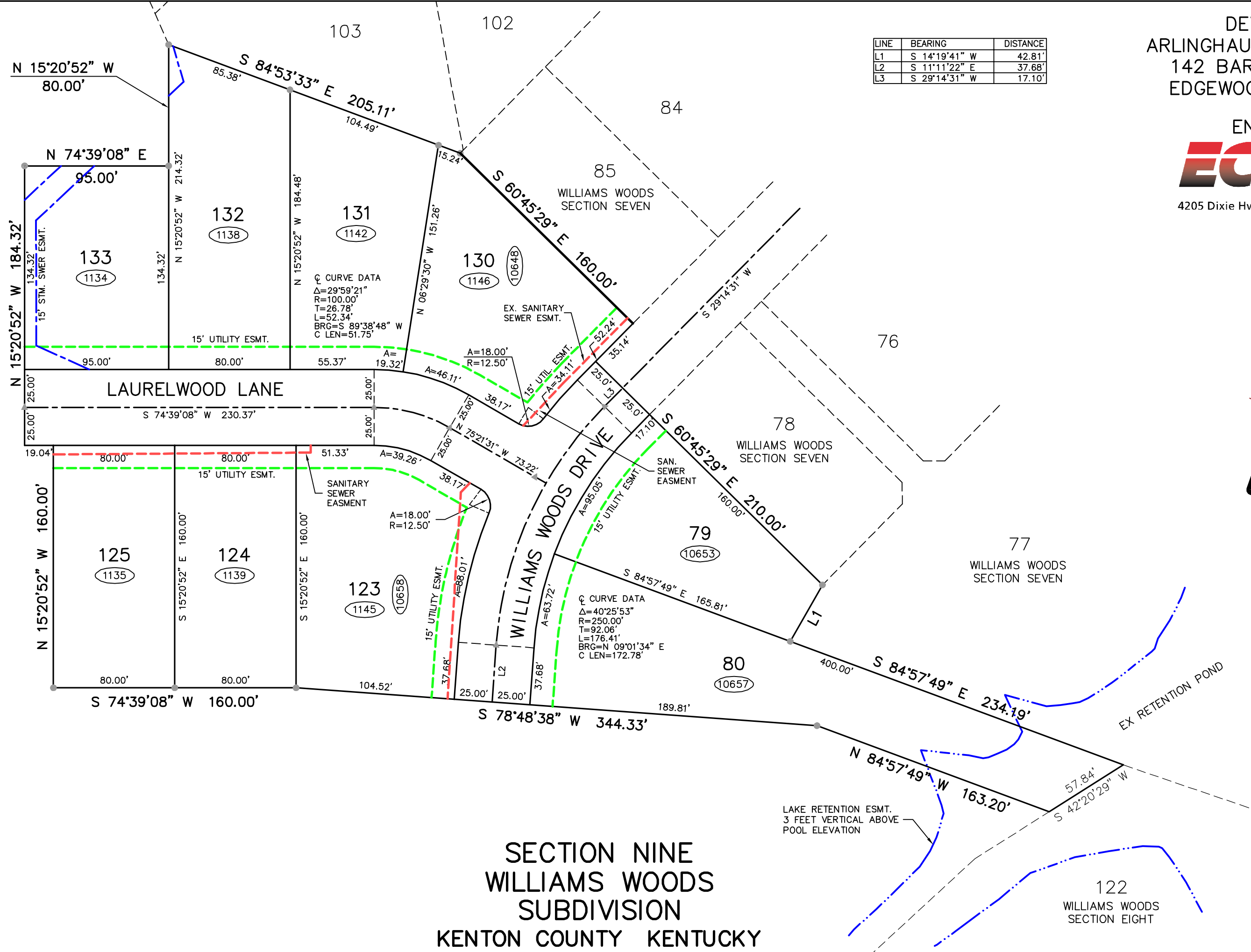


DEVELOPER
 ARLINGHAUS BUILDERS INC.
 142 BARNWOOD DRIVE
 EDGEWOOD, KENTUCKY

ENGINEER
ECE Erpenbeck
 Consulting
 Engineers, Inc.
 4205 Dixie Hwy • Elsmere, KY 41018

LINE	BEARING	DISTANCE
L1	S 14°19'41" W	42.81'
L2	S 11°11'22" E	37.68'
L3	S 29°14'31" W	17.10'



SECTION NINE
 WILLIAMS WOODS
 SUBDIVISION
 KENTON COUNTY KENTUCKY

I:\2000-0351\PHASE3\sales\plat\sect 9\sect9.dwg, 4/23/2007 2:44:42 PM