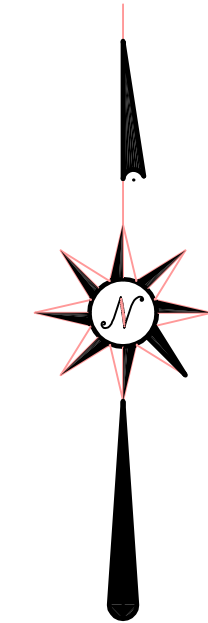


ROBERT T. WESTERMEYER P.L.S. 2931
 ERPENBECK CONSULTING ENGINEERS, INC.
 4205 DIXIE HIGHWAY
 ELSMERE, KENTUCKY 41018



KOPSER FAMILY
 LTD. PARTNERSHIP
 D.B. 677, PG. 180

GROUP NO. 2046

SHEET 2 AREA: 6.032 AC
 SHEET 3 AREA: 5.909 AC
 TOTAL AREA: 11.941 AC


- SET #5 REBAR 18" LONG
 W/ CAP STAMPED: LPS2930
 LPS2931
- FOUND REBAR
- ▲ SET CUT NOTCH
- △ FOUND CUT NOTCH
- ⊙ SET MAG NAIL
- ⊙ FOUND MAG NAIL

Δ=14°31'56"
 R=1041.98'
 A=264.29'
 BRG=S 08°03'40" W
 C LEN=263.58'
 T=132.86'

MONUMENT WEO3
 N: 528498.62
 E: 1517842.40

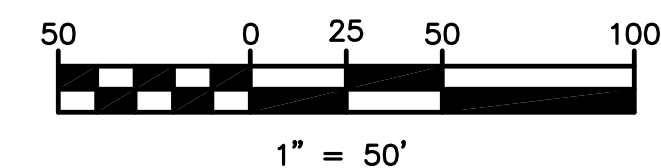
SECTION ONE
 WESTBROOK ESTATES
 SUBDIVISION
 UNIION BOONE COUNTY KENTUCKY

DEVELOPER
 ARLINGHAUS I LLC
 142 BARNWOOD DRIVE
 EDGEWOOD, KENTUCKY

ENGINEER

 4205 Dixie Hwy • Elsmere, KY 41018

MARCH, 2009

SHEET 3 OF 3



☉ CURVE DATA
 Δ=33°46'52"
 R=300.00'
 A=176.88'
 BRG=S 16°05'44" E
 C LEN=174.33'
 T=91.09'

☉ CURVE DATA
 Δ=14°31'57"
 R=500.00'
 A=126.82'
 BRG=S 08°03'40" W
 C LEN=126.48'
 T=63.75'

ARLINGHAUS I LLC
 BY MERGER WITH
 ARLINGHAUS BUILDERS, INC.
 D.B. 779, PG. 178

CENTERLINE
 CONTROL

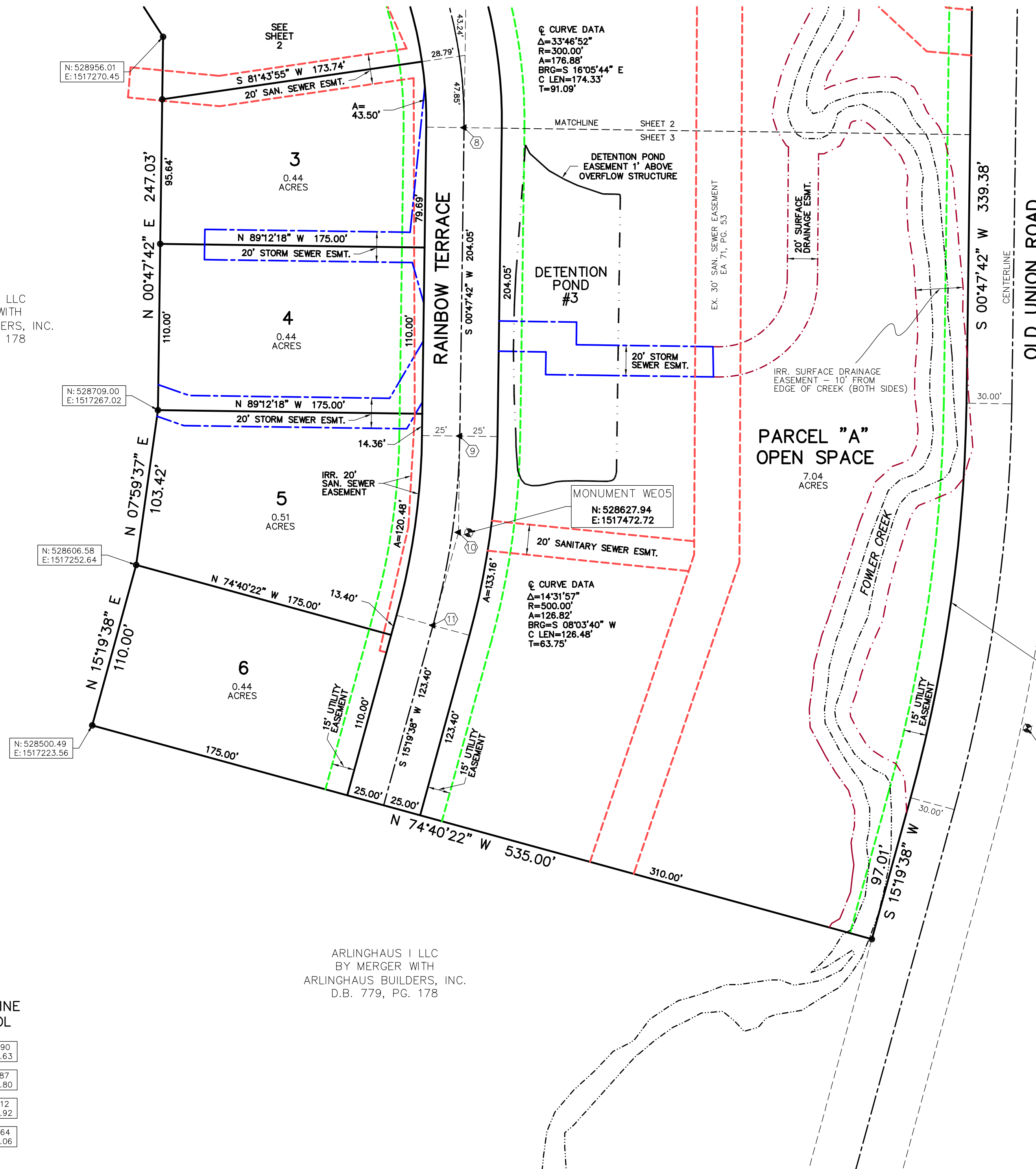
- ⑧ N: 528895.90
 E: 1517469.63
- ⑨ N: 528691.87
 E: 1517466.80
- ⑩ N: 528628.12
 E: 1517465.92
- ⑪ N: 528566.64
 E: 1517449.06

UNLESS OTHERWISE SHOWN, A TEN (10) FOOT WIDE PRIVATE DRAINAGE EASEMENT SHALL EXIST ALONG EACH LOT LINE, THE LOT LINE BEING THE CENTERLINE OF SAID EASEMENT. ARLINGHAUS I LLC RESERVES THE RIGHT TO ENTER UPON ALL LOTS TO ESTABLISH OR RE-ESTABLISH DRAINAGE SWALES WITHIN SAID EASEMENT FOR THE PURPOSE OF CONTROLLING AND/OR DIRECTING STORM WATER TO COLLECTION FACILITIES, DRAINAGE SWALES AND/OR TO GENERALLY PROVIDE PROPER DRAINAGE CONTROL

BUILDING SETBACKS WILL BE DETERMINED BY CURRENT APPLICABLE ZONING REGULATIONS OR DISTRICT

ALL EASEMENTS SHOWN SHALL BE CENTERED ON THEIR APPROPRIATE STRUCTURES UNLESS OTHERWISE NOTED

MAG NAIL SET AT THE INTERSECTION OF THE LOT LINE AND THE CENTERLINE TANGENT, UNLESS SAID POINT IS NOT ON STREET PAVEMENT. FRONT CORNER CAN BE ESTABLISHED BY THIS REFERENCE POINT.



ARLINGHAUS I LLC
 BY MERGER WITH
 ARLINGHAUS BUILDERS, INC.
 D.B. 779, PG. 178

N: 528956.01
 E: 1517270.45

N: 528709.00
 E: 1517267.02

N: 528606.58
 E: 1517252.64

N: 528500.49
 E: 1517223.56

3
 0.44
 ACRES

4
 0.44
 ACRES

5
 0.51
 ACRES

6
 0.44
 ACRES

DETENTION
 POND
 #3

PARCEL "A"
 OPEN SPACE
 7.04
 ACRES

MONUMENT WEO5
 N: 528627.94
 E: 1517472.72

MONUMENT WEO3
 N: 528498.62
 E: 1517842.40