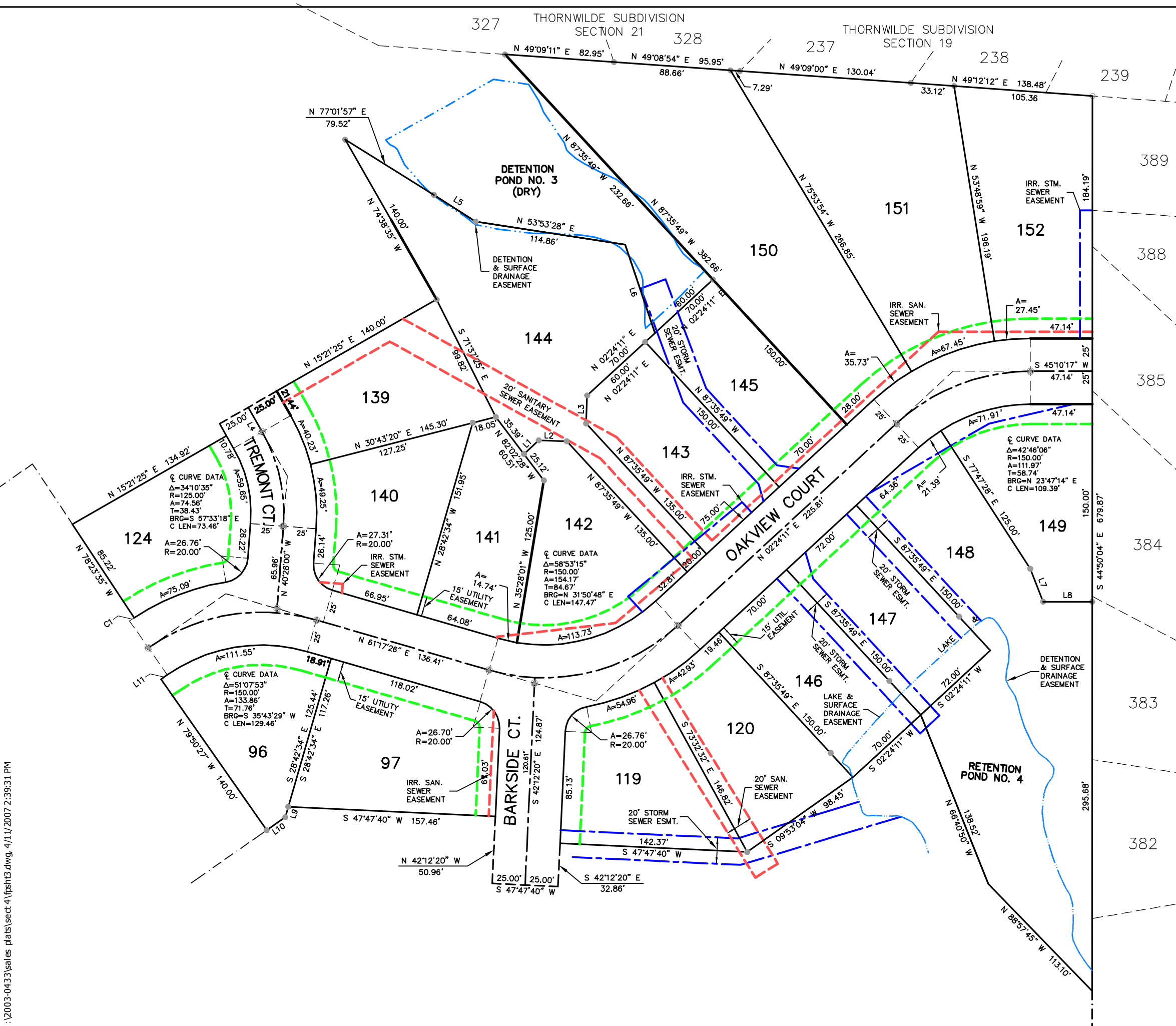


LINE	BEARING	DISTANCE
L1	N 02°24'11" E	15.38'
L2	N 47°24'11" E	21.21'
L3	S 42°35'49" E	21.21'
L4	N 74°38'35" W	21.44'
L5	N 77°41'13" E	37.60'
L6	S 63°25'21" E	70.93'
L7	S 66°12'46" E	26.85'
L8	N 45°10'17" E	37.37'
L9	S 28°42'34" E	8.18'
L10	S 10°09'33" W	17.34'
L11	S 10°09'33" W	5.81'

CURVE	RADIUS	ARC LENGTH	CHORD LENGTH	CHORD BEARING	DELTA ANGLE
C1	175.00'	4.42'	4.42'	N 10°52'55" E	01°26'53"



**SECTION FOUR  
TREETOPS  
ESTATES  
BOONE COUNTY KENTUCKY**

DEVELOPER  
ARLINGHAUS I, LLC  
d.b.a. ARLINGHAUS BUILDERS  
142 BARNWOOD DRIVE  
EDGEWOOD, KENTUCKY

ENGINEER  
**ECE** Erpenbeck  
Consulting  
Engineers, Inc.

4205 Dixie Hwy • Elsmere, KY 41018

I:\2003-04333\sales plates\sect 4\fpsh3.dwg, 4/11/2007 2:39:31 PM