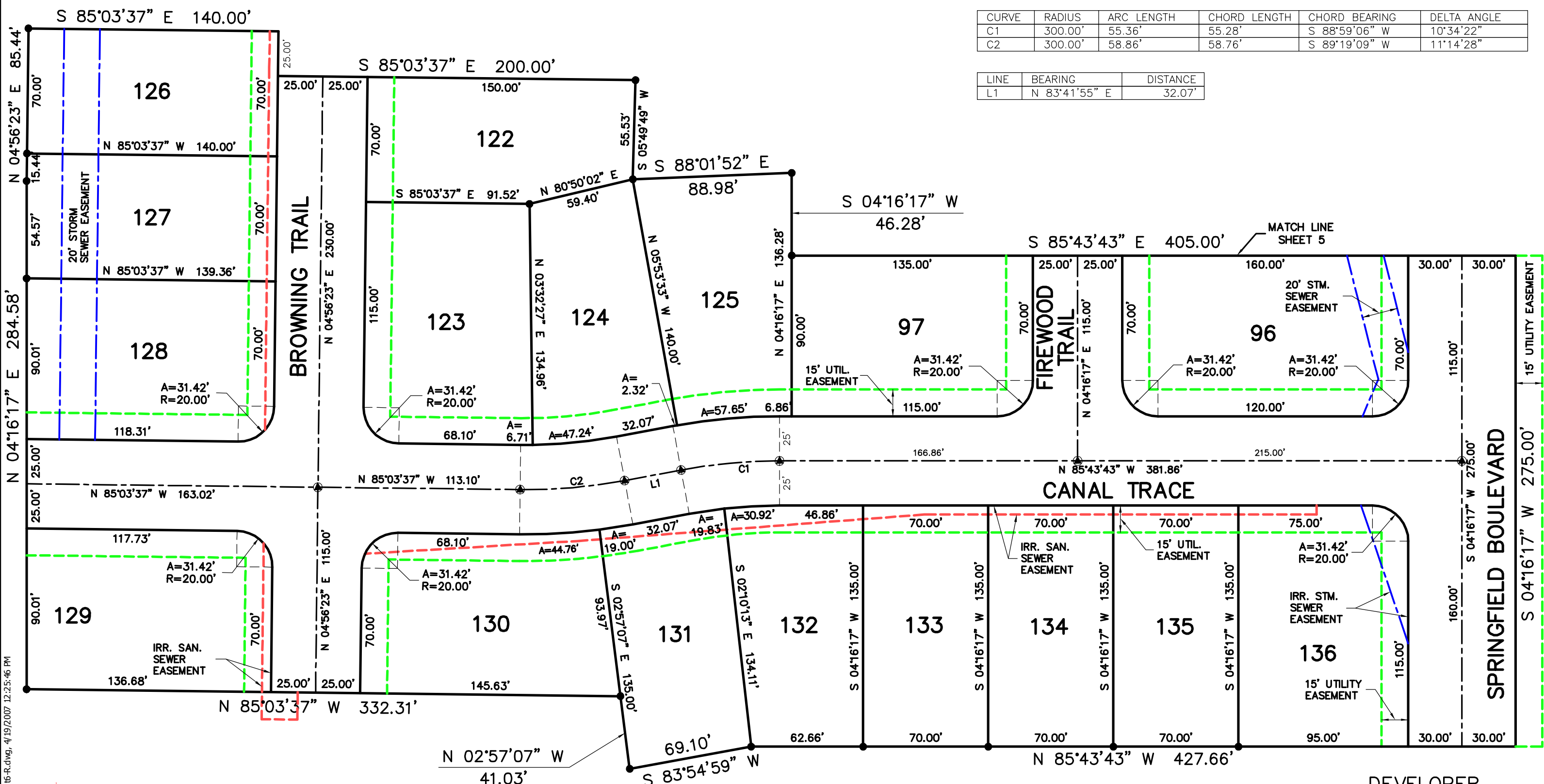


CURVE	RADIUS	ARC LENGTH	CHORD LENGTH	CHORD BEARING	DELTA ANGLE
C1	300.00'	55.36'	55.28'	S 88°59'06" W	10°34'22"
C2	300.00'	58.86'	58.76'	S 89°19'09" W	11°14'28"

LINE	BEARING	DISTANCE
L1	N 83°41'55" E	32.07'



I:\2002-0391\revphase1\SALES\PLAT\section 3\fish6-R.dwg, 4/19/2007 12:25:46 PM



SECTION THREE
HUNTER'S RIDGE
SUBDIVISION
BOONE COUNTY KENTUCKY

DEVELOPER
ARLINGHAUS I, LLC
142 BARNWOOD DRIVE
EDGEWOOD, KENTUCKY

ENGINEER
ECE Erpenbeck
Consulting
Engineers, Inc.
4205 Dixie Hwy • Elsmere, KY 41018