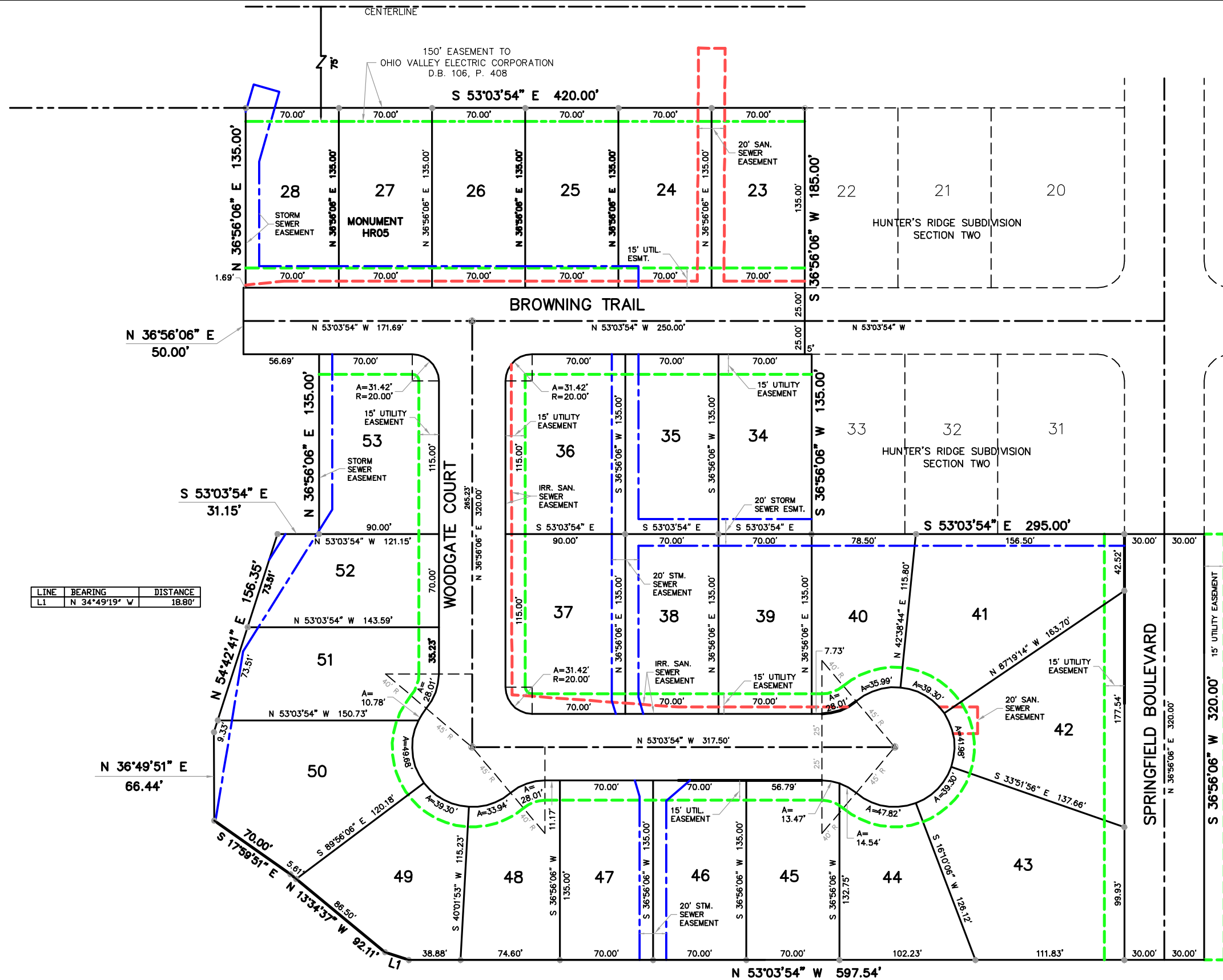


\\2002-0391\revphase1\SALES\PLAT\section 3\fish2-R.dwg, 4/19/2007 12:25:06 PM



LINE	BEARING	DISTANCE
L1	N 34°49'19" W	18.80'

SECTION THREE
 HUNTER'S RIDGE
 SUBDIVISION
 BOONE COUNTY KENTUCKY

DEVELOPER
 ARLINGHAUS I, LLC
 142 BARNWOOD DRIVE
 EDGEWOOD, KENTUCKY

ENGINEER
ECE Erpenbeck
 Consulting
 Engineers, Inc.
 4205 Dixie Hwy • Elsmere, KY 41018