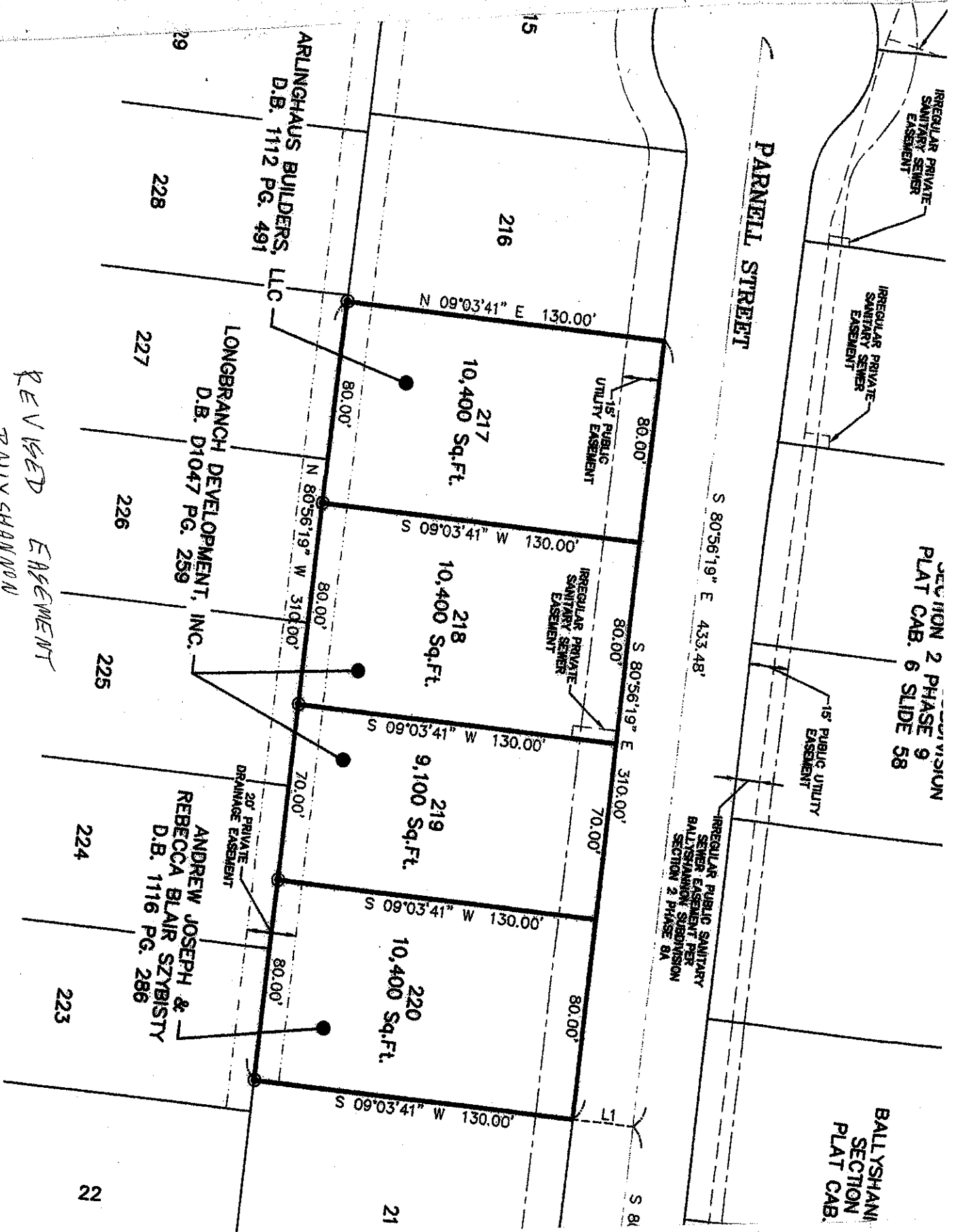


SECTION 2 PHASE 9
PLAT CAB. 6 SLIDE 58

BALLYSHANI
SECTION
PLAT CAB.

PARNELL STREET

IRREGULAR PUBLIC SANITARY
SEWER EASEMENT PER
BALLYSHANON SUBDIVISION
SECTION 2 PHASE 9A



ARLINGHAUS BUILDERS, LLC
D.B. 1112 PG. 491

LONGBRANCH DEVELOPMENT, INC.
D.B. D1047 PG. 259

ANDREW JOSEPH &
REBECCA BLAIR SZYBISTY
D.B. 1116 PG. 286

REVISED EASEMENT
BALLYSHANON
SECTION 2 PHASE 9