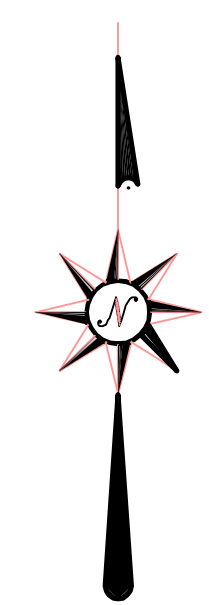


ROBERT T. WESTERMEYER P.L.S. 2931  
 ERPENBECK CONSULTING ENGINEERS, INC.  
 4205 DIXIE HIGHWAY  
 ELSMERE, KENTUCKY 41018



GROUP NO. 2047  
 TOTAL AREA: 11.911 AC  
 4.350 AC THIS SHEET

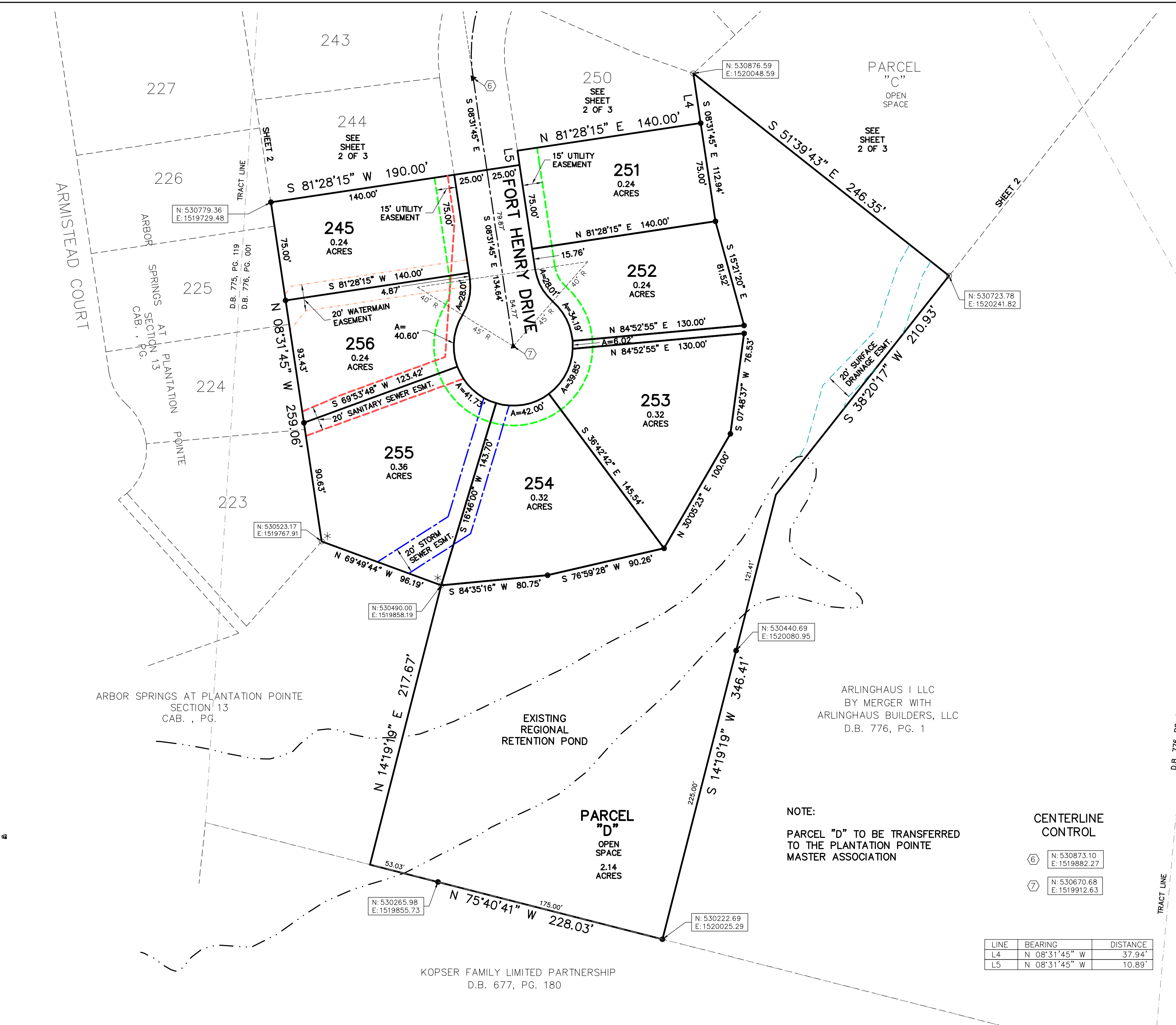
- SET #5 REBAR 18" LONG  
 W/ CAP STAMPED: LPS2930  
 LPS2931
- FOUND REBAR
- ▲ SET CUT NOTCH
- △ FOUND CUT NOTCH
- ⊙ SET MAG NAIL
- ⊙ FOUND MAG NAIL
- \*○ FOUND #5 REBAR  
 W/ CAP STAMPED: LPS2930  
 LPS2931

SECTION FOURTEEN  
 ARBOR SPRINGS  
 AT PLANTATION POINTE  
 CITY OF UNION  
 BOONE COUNTY KENTUCKY

DEVELOPER  
 ARLINGHAUS I, LLC  
 142 BARNWOOD DRIVE  
 EDGEWOOD, KENTUCKY

ENGINEER  
**ECE** Erpenbeck  
 Consulting  
 Engineers, Inc.  
 4205 Dixie Hwy • Elsmere, KY 41018

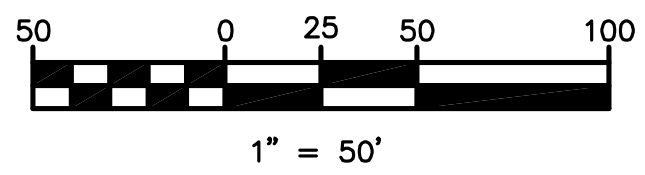
JULY, 2007 SCALE: 1"=50'



CENTERLINE CONTROL

6	N: 530873.10 E: 1519882.27
7	N: 530670.68 E: 1519912.63

LINE	BEARING	DISTANCE
L4	N 08°31'45" W	37.94'
L5	N 08°31'45" W	10.89'



UNLESS OTHERWISE SHOWN, A TEN (10) FOOT WIDE PRIVATE DRAINAGE EASEMENT SHALL EXIST ALONG EACH LOT LINE, THE LOT LINE BEING THE CENTERLINE OF SAID EASEMENT. ARLINGHAUS I, LLC RESERVES THE RIGHT TO ENTER UPON ALL LOTS TO ESTABLISH OR RE-ESTABLISH DRAINAGE SWALES WITHIN SAID EASEMENT FOR THE PURPOSE OF CONTROLLING AND/OR DIRECTING STORM WATER TO COLLECTION FACILITIES, DRAINAGE SWALES AND/OR TO GENERALLY PROVIDE PROPER DRAINAGE CONTROL

BUILDING SETBACKS WILL BE DETERMINED BY CURRENT APPLICABLE ZONING REGULATIONS OR DISTRICT

ALL STORM SEWER, SANITARY SEWER, WATERMAIN AND SURFACE DRAINAGE EASEMENTS SHOWN SHALL BE CENTERED ON THEIR APPROPRIATE STRUCTURES UNLESS OTHERWISE NOTED

MAG NAIL SET AT THE INTERSECTION OF THE LOT LINES AND THE CENTERLINE TANGENTS UNLESS SAID POINT IS NOT ON STREET PAVEMENT

MAG NAIL SET AT THE P.C., P.I. AND P.T. OF ALL CURVES UNLESS SAID POINT IS NOT ON STREET PAVEMENT

KOPSER FAMILY LIMITED PARTNERSHIP  
 D.B. 677, PG. 180

ARLINGHAUS I LLC  
 BY MERGER WITH  
 ARLINGHAUS BUILDERS, LLC  
 D.B. 776, PG. 1

NOTE:  
 PARCEL "D" TO BE TRANSFERRED TO THE PLANTATION POINTE MASTER ASSOCIATION

PARCEL "D"  
 OPEN SPACE  
 2.14 ACRES

EXISTING REGIONAL RETENTION POND

ARMISTEAD COURT  
 ARBOR SPRINGS AT PLANTATION POINTE SECTION 13 CAB. PG.

ARBOR SPRINGS AT PLANTATION POINTE SECTION 13 CAB. PG.

ARBOR SPRINGS AT PLANTATION POINTE SECTION 13 CAB. PG.

UNLESS OTHERWISE SHOWN, A TEN (10) FOOT WIDE PRIVATE DRAINAGE EASEMENT SHALL EXIST ALONG EACH LOT LINE, THE LOT LINE BEING THE CENTERLINE OF SAID EASEMENT. ARLINGHAUS I, LLC RESERVES THE RIGHT TO ENTER UPON ALL LOTS TO ESTABLISH OR RE-ESTABLISH DRAINAGE SWALES WITHIN SAID EASEMENT FOR THE PURPOSE OF CONTROLLING AND/OR DIRECTING STORM WATER TO COLLECTION FACILITIES, DRAINAGE SWALES AND/OR TO GENERALLY PROVIDE PROPER DRAINAGE CONTROL