

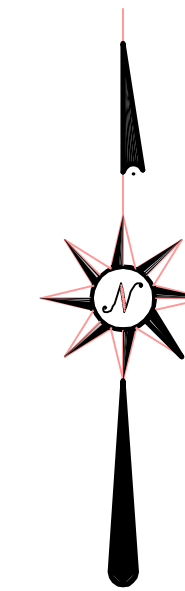
ROBERT T. WESTERMEYER P.L.S. 2931
 ERPENBECK CONSULTING ENGINEERS, INC.
 4205 DIXIE HIGHWAY
 ELSMERE, KENTUCKY 41018

ARLINGHAUS I LLC
 BY MERGER WITH
 ARLINGHAUS BUILDERS INC.
 D.B. 730, PG. 293

ARLINGHAUS I LLC
 BY MERGER WITH
 ARLINGHAUS BUILDERS INC.
 D.B. 775, PG. 119

ARLINGHAUS I LLC
 BY MERGER WITH
 ARLINGHAUS BUILDERS INC.
 D.B. 730, PG. 293

ARLINGHAUS I LLC
 BY MERGER WITH
 ARLINGHAUS BUILDERS INC.
 D.B. 776, PG. 1



GROUP NO. 2047
 TOTAL AREA: 10.222 AC
 4.526 AC THIS SHEET

- SET #5 REBAR 18" LONG
 W/ CAP STAMPED: LPS2930
 LPS2931
- FOUND REBAR
- ▲ SET CUT NOTCH
- △ FOUND CUT NOTCH
- ⊙ SET MAG NAIL
- ⊚ FOUND MAG NAIL

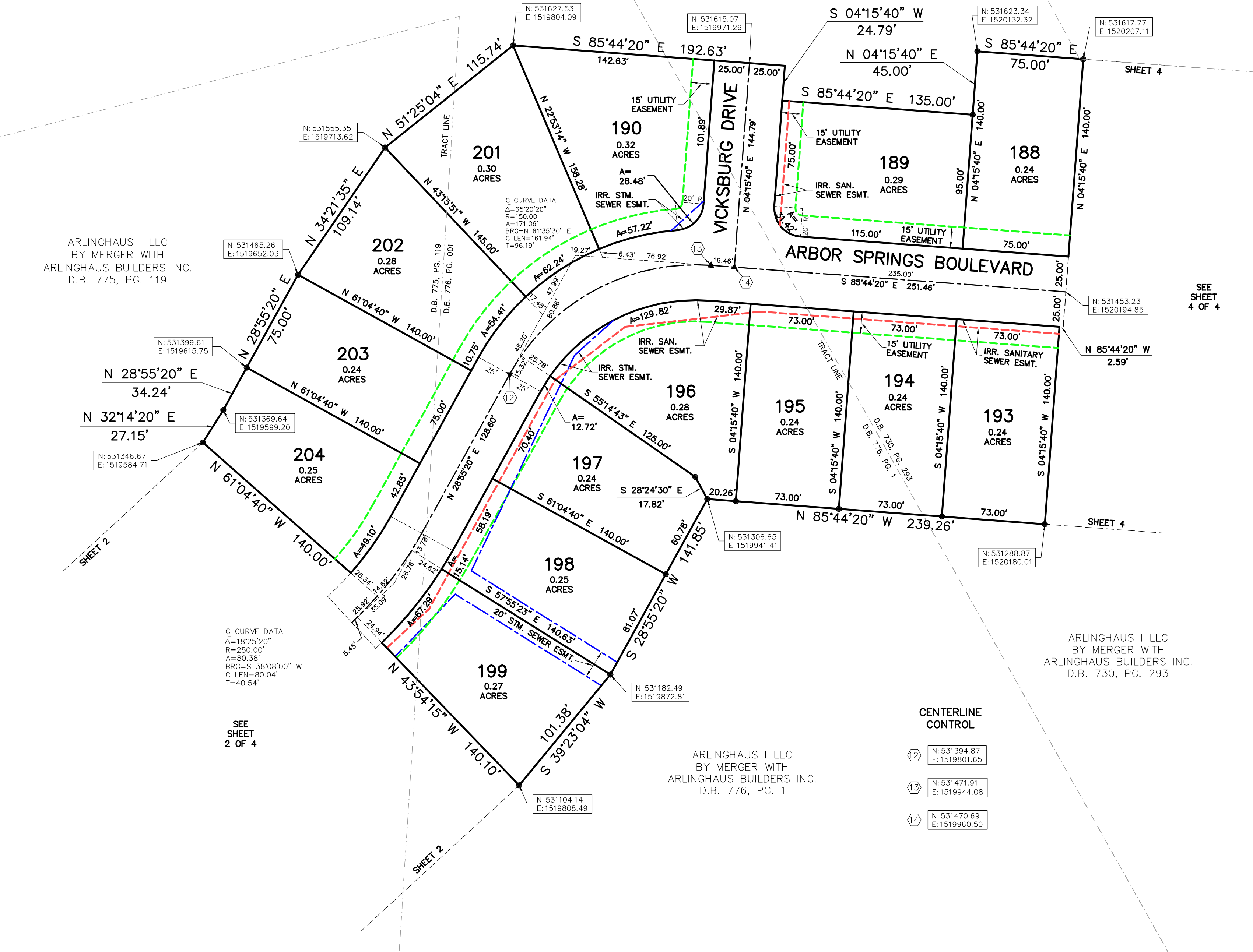
SECTION TWELVE
 ARBOR SPRINGS
 AT PLANTATION POINTE
 CITY OF UNION
 BOONE COUNTY KENTUCKY

DEVELOPER
 ARLINGHAUS I, LLC
 142 BARNWOOD DRIVE
 EDGEWOOD, KENTUCKY

ENGINEER
ECE Erpenbeck
 Consulting
 Engineers, Inc.
 4205 Dixie Hwy • Elsmere, KY 41018

JULY, 2007 SCALE: 1"=50'

SHEET 3 OF 4



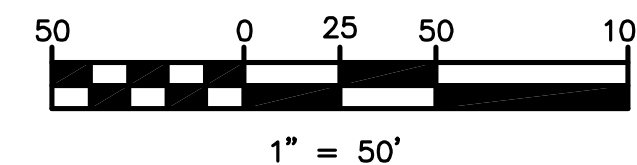
UNLESS OTHERWISE SHOWN, A TEN (10) FOOT WIDE PRIVATE DRAINAGE EASEMENT SHALL EXIST ALONG EACH LOT LINE, THE LOT LINE BEING THE CENTERLINE OF SAID EASEMENT. ARLINGHAUS I, LLC RESERVES THE RIGHT TO ENTER UPON ALL LOTS TO ESTABLISH OR RE-ESTABLISH DRAINAGE SWALES WITHIN SAID EASEMENT FOR THE PURPOSE OF CONTROLLING AND/OR DIRECTING STORM WATER TO COLLECTION FACILITIES, DRAINAGE SWALES AND/OR TO GENERALLY PROVIDE PROPER DRAINAGE CONTROL

BUILDING SETBACKS WILL BE DETERMINED BY CURRENT APPLICABLE ZONING REGULATIONS OR DISTRICT

ALL STORM SEWER, SANITARY SEWER, WATERMAIN AND SURFACE DRAINAGE EASEMENTS SHOWN SHALL BE CENTERED ON THEIR APPROPRIATE STRUCTURES UNLESS OTHERWISE NOTED

MAG NAIL SET AT THE INTERSECTION OF THE LOT LINES AND THE CENTERLINE TANGENTS UNLESS SAID POINT IS NOT ON STREET PAVEMENT

MAG NAIL SET AT THE P.C., P.I. AND P.T. OF ALL CURVES UNLESS SAID POINT IS NOT ON STREET PAVEMENT



⊙ CURVE DATA
 Δ=18°25'20"
 R=250.00'
 A=80.38'
 BRG=S 38°08'00" W
 C LEN=80.04'
 T=40.54'

SEE SHEET 2 OF 4

SEE SHEET 4 OF 4

SHEET 2

SHEET 4

SHEET 4

SHEET 2