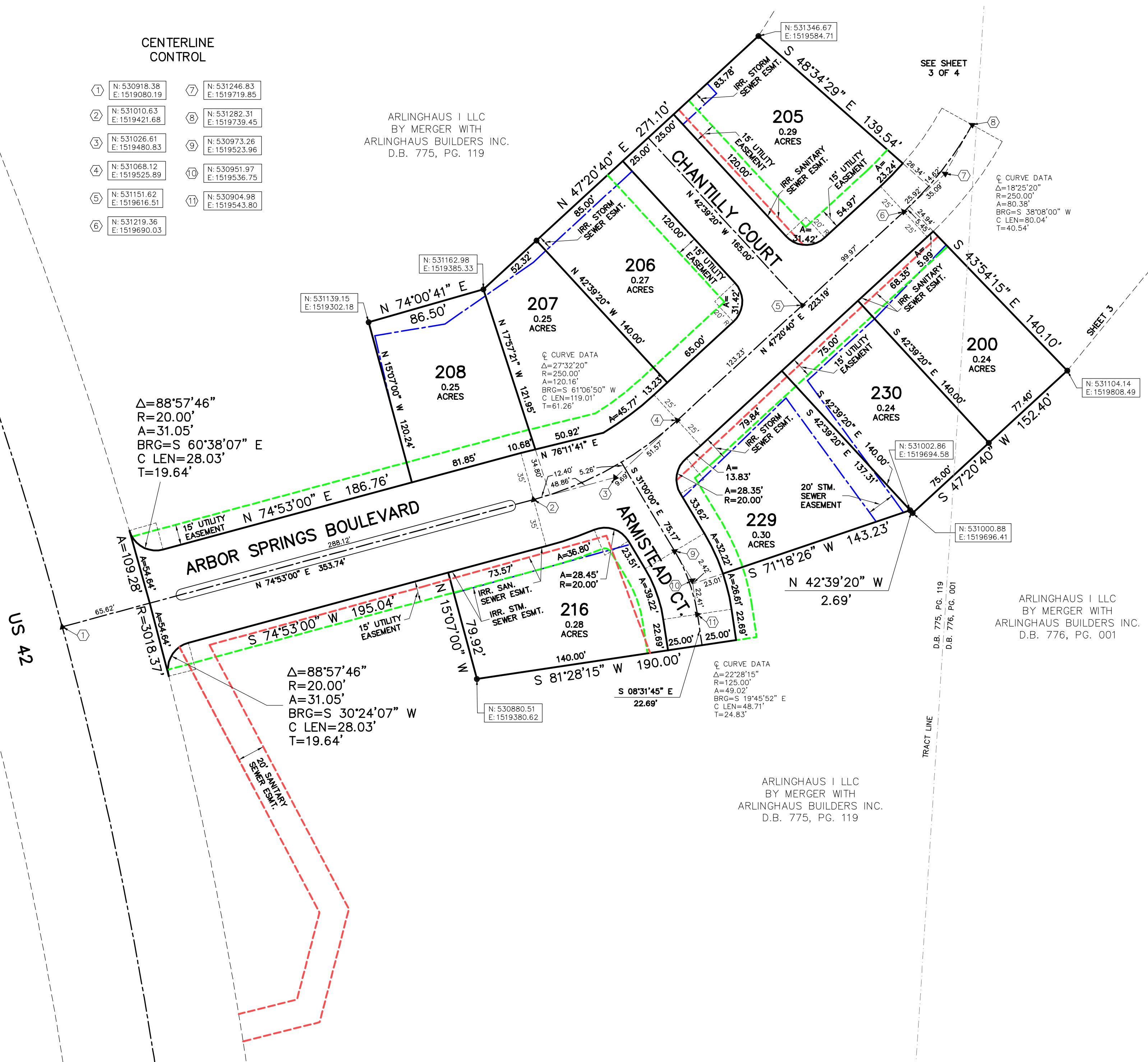


CENTERLINE CONTROL

①	N: 530918.38 E: 1519080.19	⑦	N: 531246.83 E: 1519719.85
②	N: 531010.63 E: 1519421.68	⑧	N: 531282.31 E: 1519739.45
③	N: 531026.61 E: 1519480.83	⑨	N: 530973.26 E: 1519523.96
④	N: 531068.12 E: 1519525.89	⑩	N: 530951.97 E: 1519536.75
⑤	N: 531151.62 E: 1519616.51	⑪	N: 530904.98 E: 1519543.80
⑥	N: 531219.36 E: 1519690.03		

ARLINGHAUS I LLC  
BY MERGER WITH  
ARLINGHAUS BUILDERS INC.  
D.B. 775, PG. 119

ROBERT T. WESTERMEYER P.L.S. 2931  
ERPENBECK CONSULTING ENGINEERS, INC.  
4205 DIXIE HIGHWAY  
ELSMERE, KENTUCKY 41018



GROUP NO. 2047  
TOTAL AREA: 10.222 AC  
3.317 AC THIS SHEET

- SET #5 REBAR 18" LONG  
W/ CAP STAMPED: LPS2930  
LPS2931
- FOUND REBAR
- ▲ SET CUT NOTCH
- △ FOUND CUT NOTCH
- ⊙ SET MAG NAIL
- ⊙ FOUND MAG NAIL

ARLINGHAUS I LLC  
BY MERGER WITH  
ARLINGHAUS BUILDERS INC.  
D.B. 776, PG. 001

SECTION TWELVE  
ARBOR SPRINGS  
AT PLANTATION POINTE  
CITY OF UNION  
BOONE COUNTY KENTUCKY

DEVELOPER  
ARLINGHAUS I, LLC  
142 BARNWOOD DRIVE  
EDGEWOOD, KENTUCKY

ENGINEER  
**ECE** Erpenbeck  
Consulting  
Engineers, Inc.  
4205 Dixie Hwy • Elsmere, KY 41018

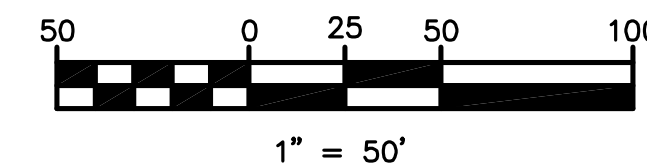
UNLESS OTHERWISE SHOWN, A TEN (10) FOOT WIDE PRIVATE DRAINAGE EASEMENT SHALL EXIST ALONG EACH LOT LINE, THE LOT LINE BEING THE CENTERLINE OF SAID EASEMENT. ARLINGHAUS I, LLC RESERVES THE RIGHT TO ENTER UPON ALL LOTS TO ESTABLISH OR RE-ESTABLISH DRAINAGE SWALES WITHIN SAID EASEMENT FOR THE PURPOSE OF CONTROLLING AND/OR DIRECTING STORM WATER TO COLLECTION FACILITIES, DRAINAGE SWALES AND/OR TO GENERALLY PROVIDE PROPER DRAINAGE CONTROL

BUILDING SETBACKS WILL BE DETERMINED BY CURRENT APPLICABLE ZONING REGULATIONS OR DISTRICT

ALL STORM SEWER, SANITARY SEWER, WATERMAIN AND SURFACE DRAINAGE EASEMENTS SHOWN SHALL BE CENTERED ON THEIR APPROPRIATE STRUCTURES UNLESS OTHERWISE NOTED

MAG NAIL SET AT THE INTERSECTION OF THE LOT LINES AND THE CENTERLINE TANGENTS UNLESS SAID POINT IS NOT ON STREET PAVEMENT

MAG NAIL SET AT THE P.C., P.I. AND P.T. OF ALL CURVES UNLESS SAID POINT IS NOT ON STREET PAVEMENT



JULY, 2007 SCALE: 1"=50'

SHEET 2 OF 4